



PA School District

PROFILE

Helping you know more about your school districts.

Property taxes account for **44.5%** of all school district revenues.



Revenue

	Twin Valley	PA School District Average
Total Revenue	\$55.7 Million	\$56.3 Million
% State	23.9%	36.3%
% Local	74.8%	57.6%
Revenue per Student	\$16,026.22	\$16,295.62
Property Market Values	\$2.01 Billion	\$1.62 Billion
Property Taxes Collected	\$34.6 Million	\$24.6 Million
% of Personal Income	4.6%	3.7%
% of Local Revenue	83.1%	77.3%

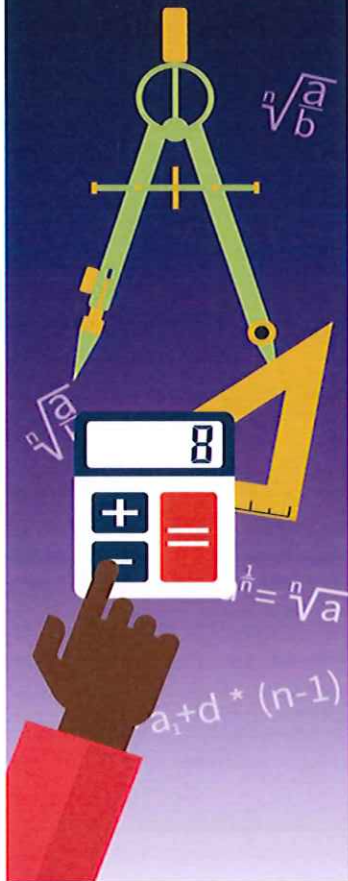
Expenditures

	Twin Valley	PA School District Average
Total Expenditures	\$54.5 Million	\$54.8 Million
% on Instruction	59.3%	58.3%
Expenditures per Student	\$15,701.81	\$15,854.67
Retirement Contributions	\$4.9 Million	\$4.7 Million
% of Expenditures	8.9%	8.5%
Charter School Tuition	\$1.1 Million	\$3.0 Million
% of Expenditures	2.0%	5.4%
Charter School Tuition Rates		
Regular Education	\$9,642.58	\$10,663.91
Special Education	\$24,077.10	\$22,538.43

Fund Balance

	Twin Valley	PA School District Average
Total Fund Balance	\$4.7 Million	\$8.6 Million
% of Expenditures	8.6%	15.6%
Unreserved Fund Balance	\$4.7 Million	\$3.5 Million
% of Expenditures	8.6%	6.3%

PA 4th grade students ranked **9th** in national math assessment

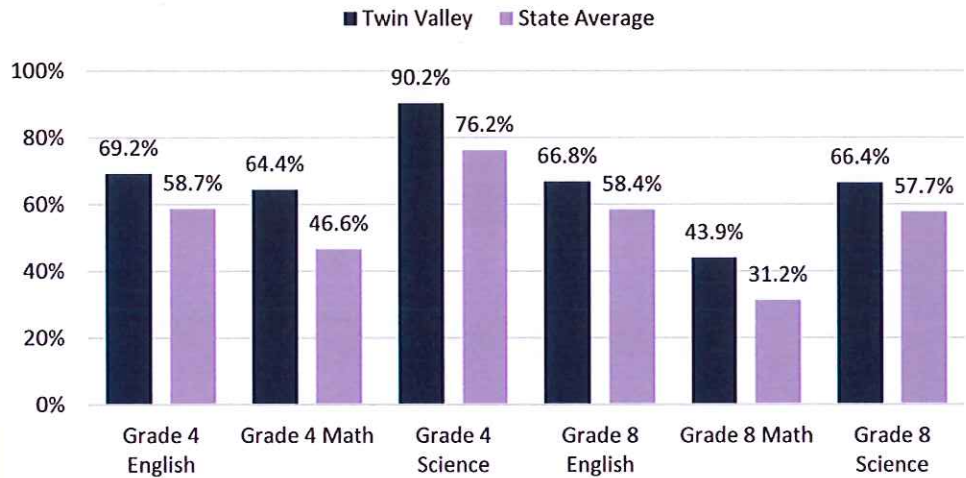


Enrollments

	Twin Valley	PA School District Average
Average Daily Membership	3,474	3,455
% in Charter Schools	2.3%	7.7%
% in Special Education	17.1%	15.5%
% of English Language Learners	0.3%	3.0%
4-Year Graduation Rate	93.1%	86.9%
Child Poverty Rate	7.8%	18.0%

Academic Performance

2016 PSSA - % of All Students Advanced or Proficient



Student Demographics

